

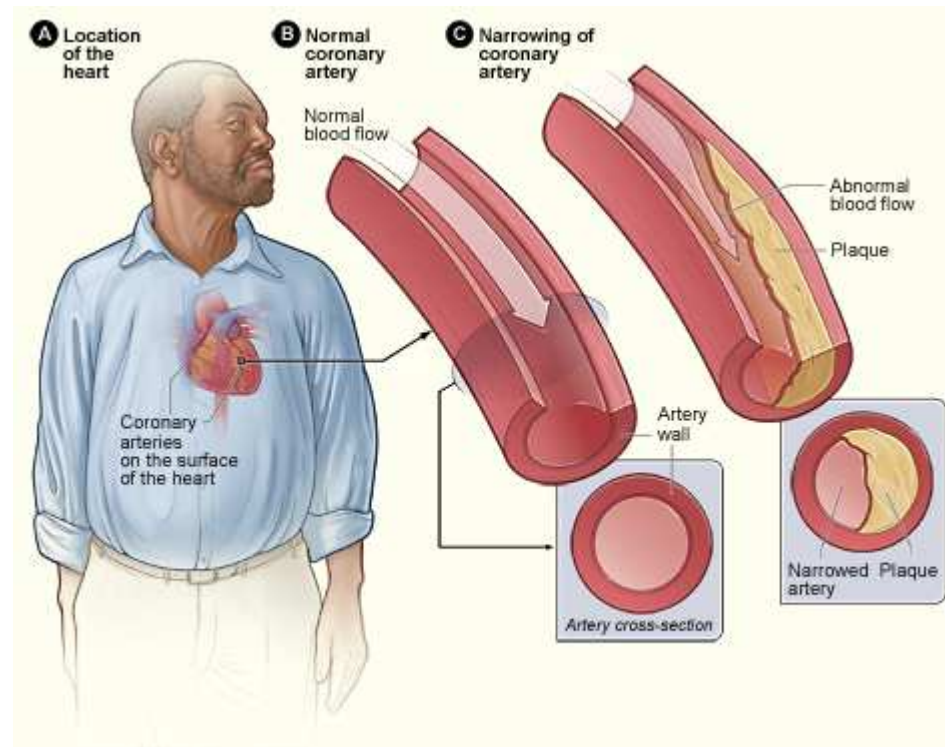
# Bien vieillir avec son cholestérol

Jean-Noël OCTAVE

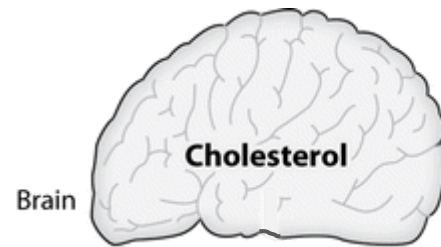


21 Mai 2014

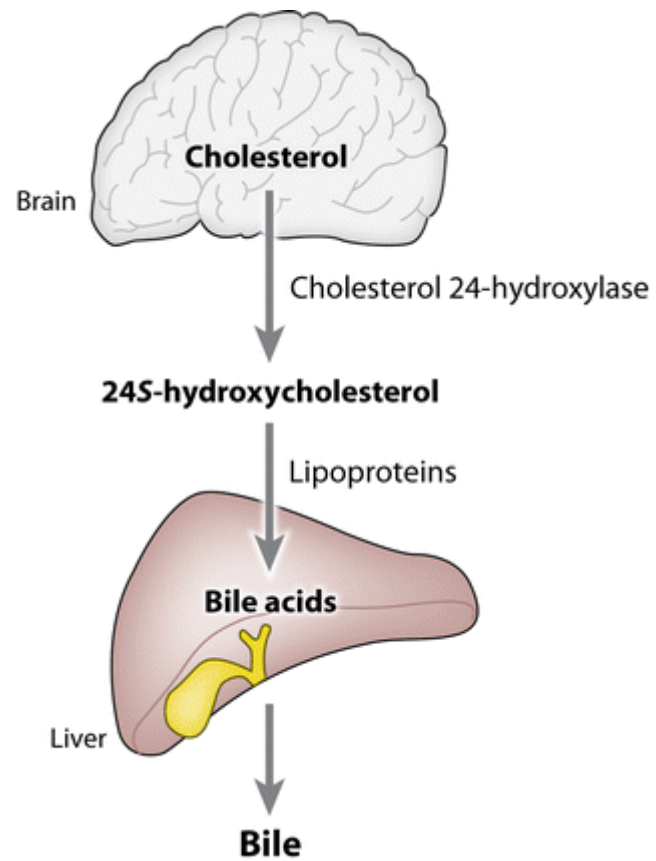
# Cholestérol vasculaire



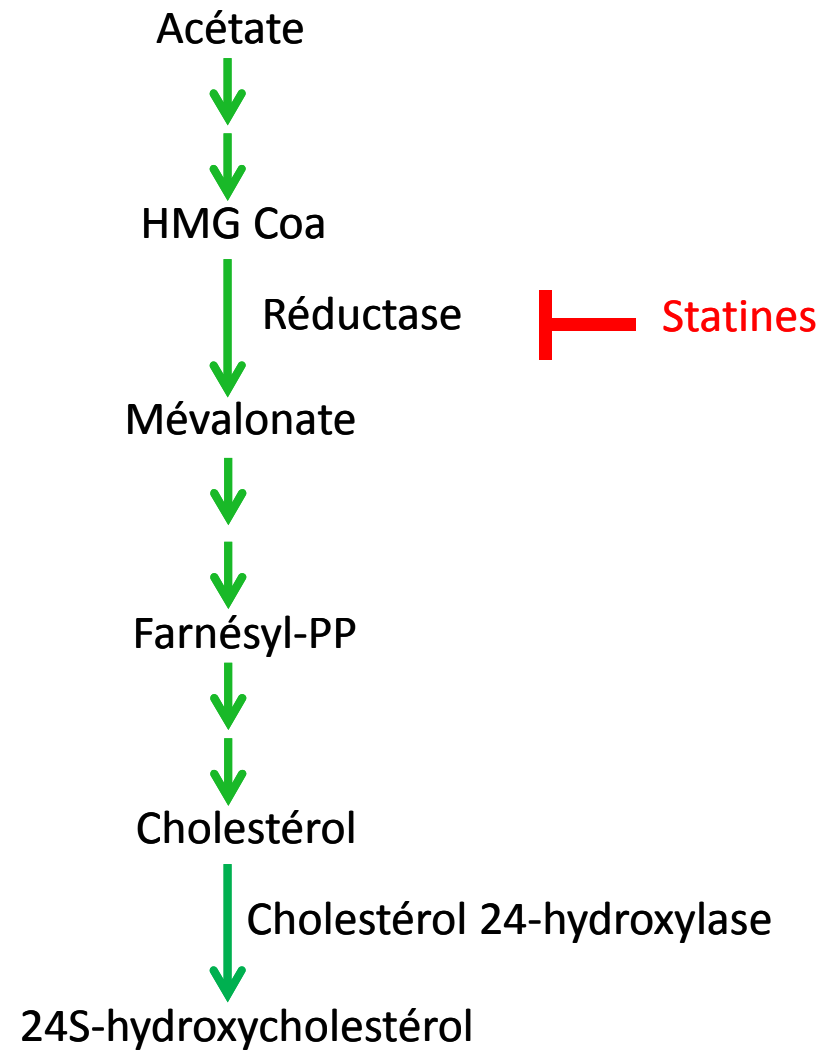
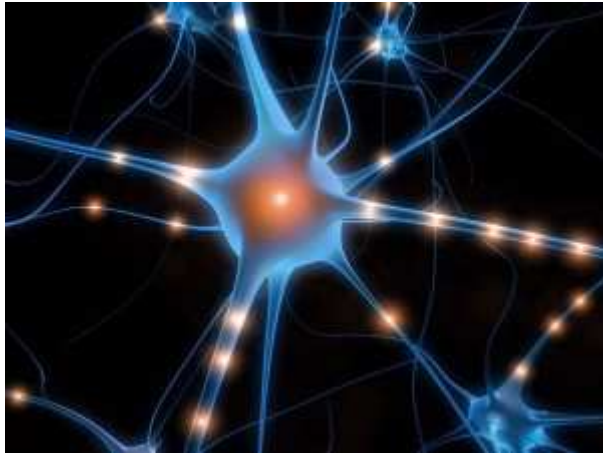
# Cholestérol cérébral



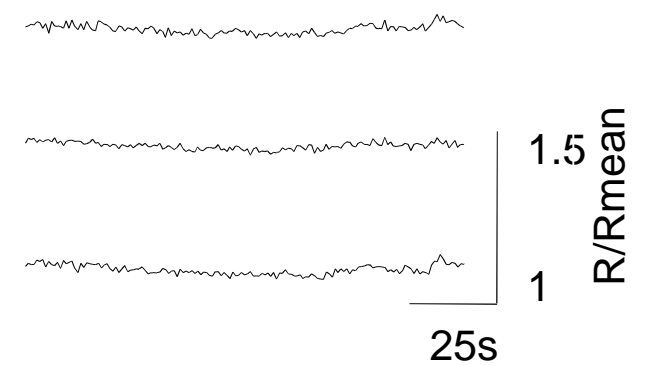
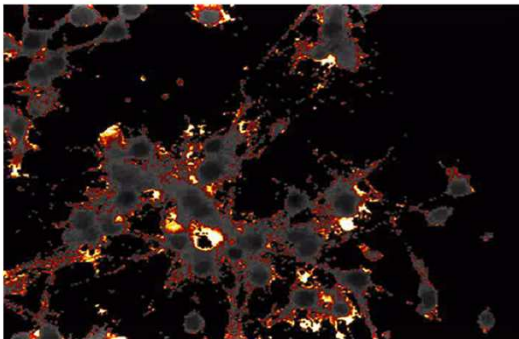
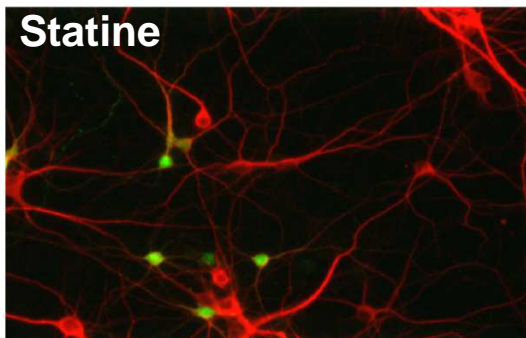
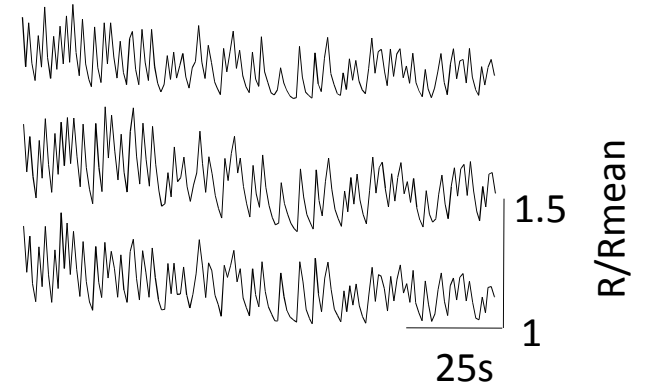
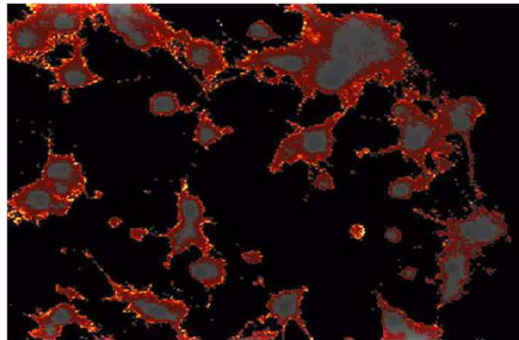
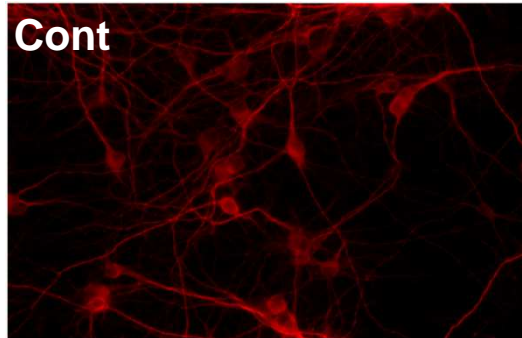
# Cholestérol cérébral



# Métabolisme neuronal du cholestérol



# Cholestérol et activité neuronale



S. Ferrao Santos et al. *The Journal of Neuroscience*, 29, 4708–4718 (2009)

N. Pierrot et al. *EMBO Mol Med* 5, 608–625, (2013)

# Louvain4ageing et Maladie d'Alzheimer



## Facteurs de risques pour la maladie d'Alzheimer

### Prévalence

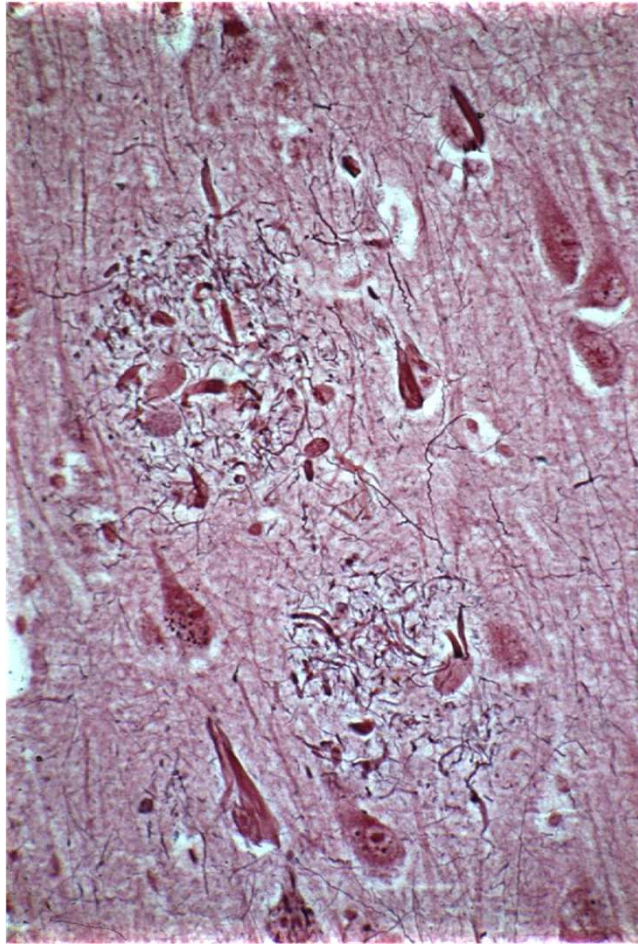
- 2% parmi les personnes âgées de 60 à 64 ans
- Double tous les 5 ans après l'âge de 65 ans
- 35 % chez les personnes de plus de 85 ans

### Facteurs de risques génétiques

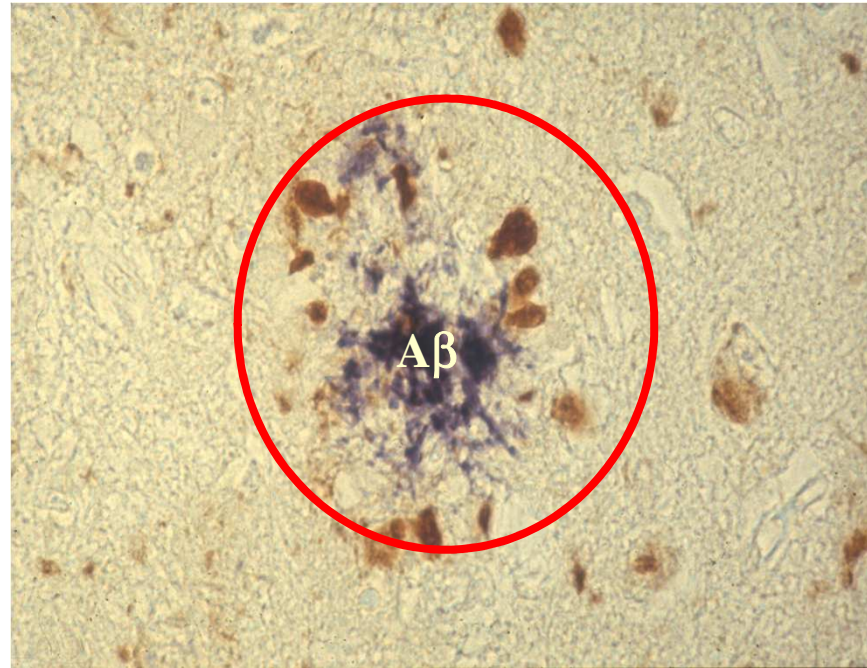
Cholestérol



# Les lésions cérébrales de la maladie d'Alzheimer

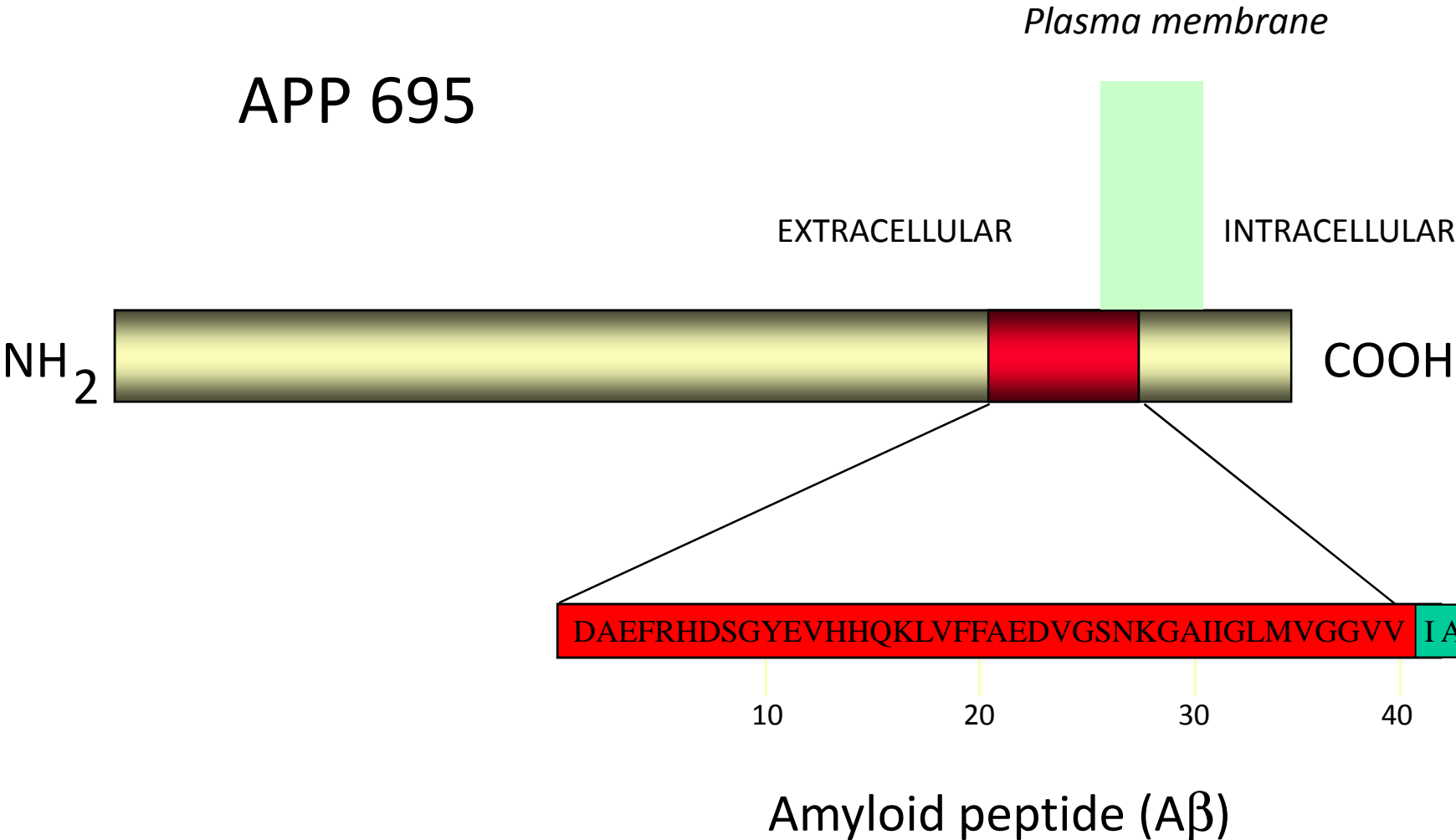


# Les plaques séniles de la maladie d'Alzheimer

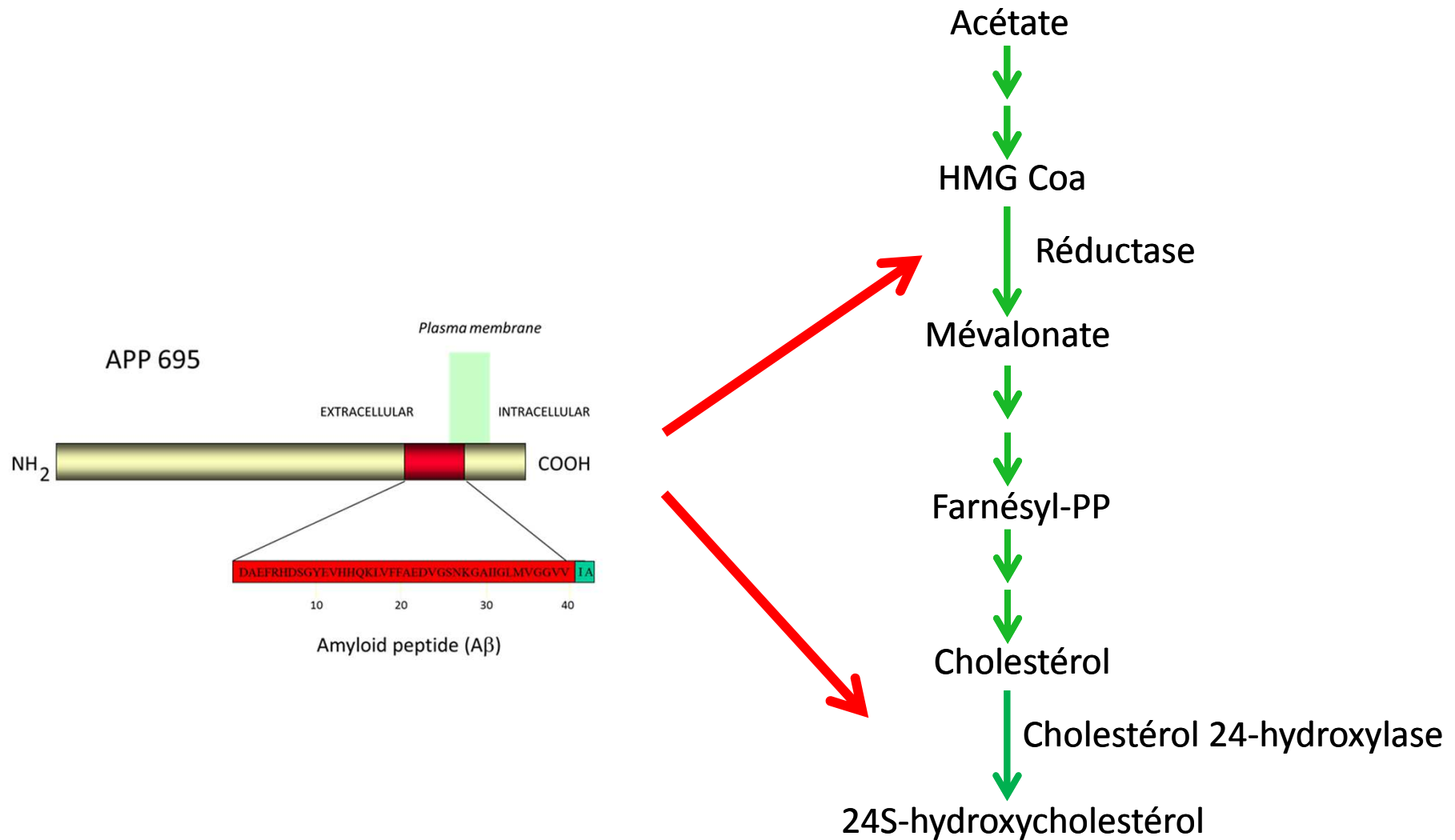


Les plaques séniles contiennent du peptide amyloïde  $A\beta$

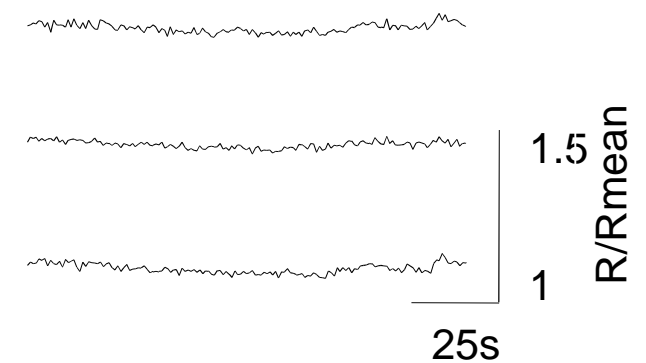
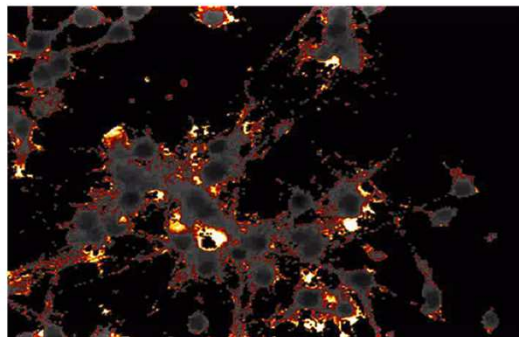
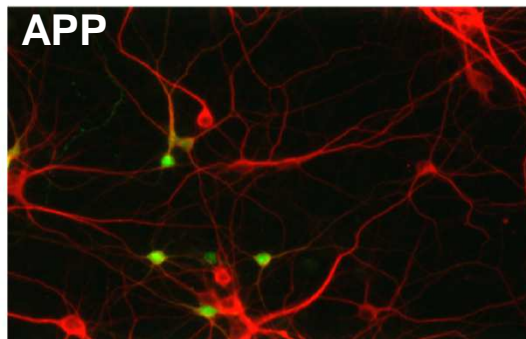
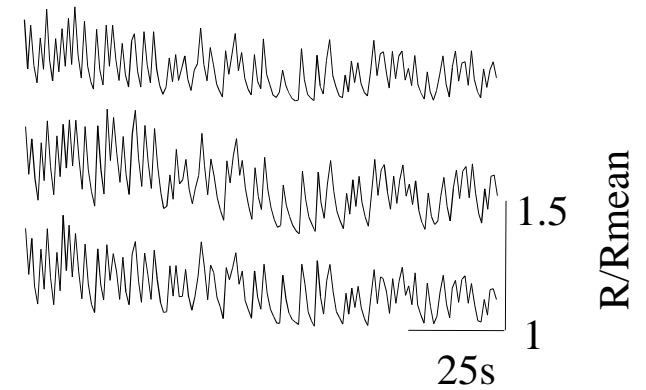
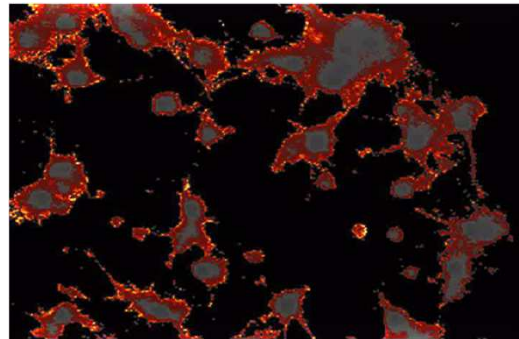
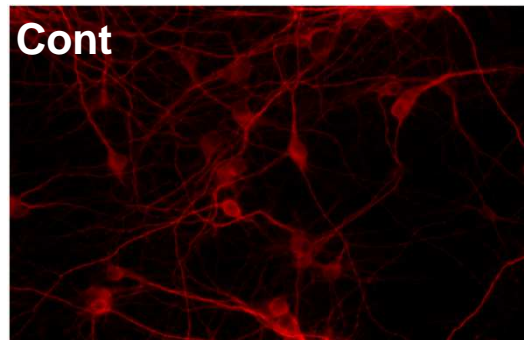
# Le précurseur du peptide amyloïde : APP



# Contrôle du métabolisme neuronal du cholestérol par l'APP



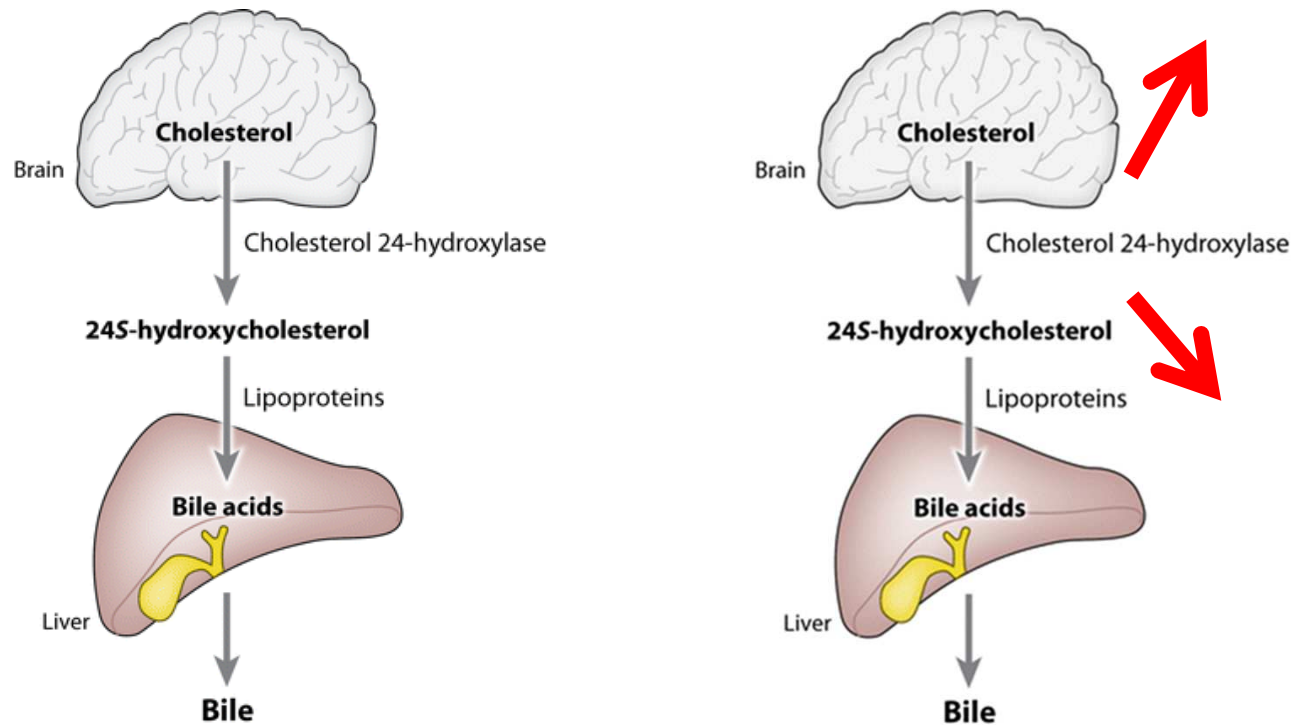
# Contrôle de l'activité neuronale par l'APP



S. Ferrao Santos et al. *The Journal of Neuroscience*, 29, 4708–4718 (2009)

N. Pierrot et al. *EMBO Mol Med* 5, 608–625, (2013)

## Cholestérol cérébral dans la maladie d'Alzheimer



Objectif : restaurer le turnover du cholestérol neuronal dans la maladie d'Alzheimer