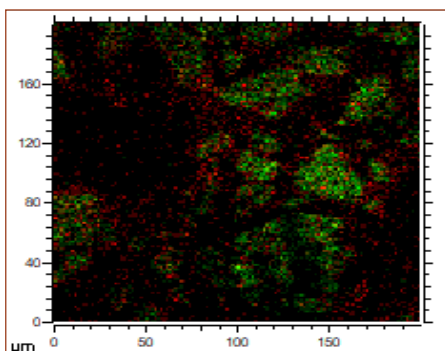


S U C H : SURface CHaracterization

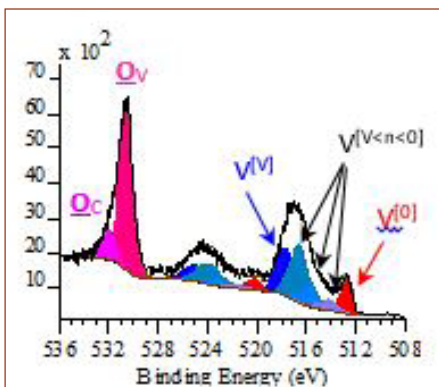
WHAT WE OFFER : services and expertise

- Characterization / tests / analysis and interpretation realized by highly qualified UCLouvain members
- Surface analysis tools (probing the first nanometers depth) in the context of material science and (bio)nanotechnology



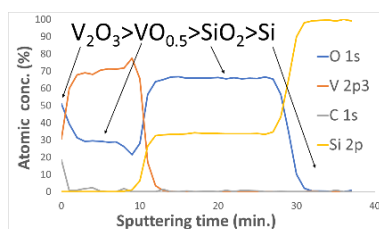
ToF-SIMS

- Solid state mass spectrometry
- 2D molecular image
- 3D depth profile



XPS

- Elemental quantification
- Chemical states
- XPS imaging and depth profile



CONTACT

Platform managers

XPS

Pierre Eloy

pierre.elay@uclouvain.be

+32(0)10/47.36.64

ToF-SIMS

Claude Poleunis

claud.poleunis@uclouvain.be

+32(0)10/47.35.82

www.uclouvain.be/such

(1) XPS spectrometer – (2) ToF-SIMS spectrometer – (3) Inside the ToF-SIMS spectrometer – (4) Stylus profilometer