

Master's Degree in Business Engineering and in Management

(120 credits)



DOWNLOAD
THIS LEAFLET



Programmes :

- Master's Degree in Business Engineering, professional focus
(120 credits - Louvain-la-Neuve/Mons)
- Master's Degree in Management, professional focus
(120 credits - Louvain-la-Neuve/Mons)
- Master's Degree in Management, research focus
(120 credits - Louvain-la-Neuve)

www.uclouvain.be/lsm



Master's Degree in Business Engineering

www.uclouvain.be/lsm

- Campus : Louvain-la-Neuve/Mons
- Daytime schedule
- Duration: 2 years
- Language of instruction: English/French
- Activities in other languages: YES
- Activities in other languages: YES
- Internships: YES



A renowned international programme that prepares you for innovative positions in the business world by enhancing your skills and expertise in project management, technology and entrepreneurship

Organised by the Louvain School of Management in Louvain-la-Neuve and Mons, this master's programme aims to train students to become socially responsible and enterprising experts who master the management of technology and IT projects as well as issues such as innovation and sustainable development.

Programme:

- a shared core course, including a Master's thesis (20 credits) and internship (10 credits);
- a professional focus (30 credits), centred on enhancing knowledge in distinct fields of business engineering;
- a major of specialisation comprised of six courses (30 credits) in the student's chosen field;
- an international exchange (30 credits) at one of the Louvain School of Management's partner universities (> 150) OR one term at LSM.

LSM also offers curricula for pursuing specific training objectives (application required):

- the CEMS Master in International Management (CEMS MIM);
- the Interdisciplinary Programme in Entrepreneurship (CPME);
- the International Business Programme (IB);
- several Double Degree programmes (DD).

ADMISSION REQUIREMENTS

For more details on admission requirements, visit:

Louvain-la-Neuve :

www.uclouvain.be/en-prog-inge2m-cond_adm

Mons :

www.uclouvain.be/en-prog-ingm2m-cond_adm

The following table shows programmes in Louvain-la-Neuve and Mons. Regardless of the campus, specialisations and options are open to all LSM students. French titles means courses are given in French.

PROGRAMME

CORE STUDY	20 credits 10 credits	Master's Thesis Internship
PROFESSIONAL FOCUS	30 credits	LLN: Seminar on Current Managerial Issues ■ Technological and Quantitative Project ■ Corporate Social Responsibility ■ Seminar on Relational and Managerial Competences ■ Performance Management ■ Data Analytics Applied in Business Mons: Seminar on Current Managerial Issues ■ Compétences relationnelles ■ Responsabilité sociétale de l'entreprise ■ Data Analytics ■ Projet quantitatif et gestion de projet ■ Pilotage stratégique de l'entreprise
MAJORS	30 credits	LLN: Philippe de Woot in Corporate Sustainable Management ■ International Finance ■ Financial Engineering ■ Marketing Strategy for Connected Brands ■ Supply Chain Management ■ Transportation Management and Supply Chain Innovation Management ■ Formation interdisciplinaire en création d'entreprise (CPME) ■ International Business Mons: Financial Management ■ Décisions marketing tactiques et digitales ■ Business Analytics and Digital Marketing ■ Business Analytics ■ Transportation Management and Supply Chain
INTERNATIONAL EXCHANGE OR ELECTIVES AND OPTIONS	30 credits	Required courses (15 credits) Compulsory language course ■ Electives ■ Corporate Strategy in the Knowledge Society (LLN). Cross-Cultural Management and Competences Option (15 credits) LLN: Corporate Sustainable Management ■ International Finance ■ Financial Engineering ■ Marketing Strategy for Connected Brands ■ Sourcing & Procurement Mons: Asset Management ■ Décision Marketing ■ Transport et logistique ■ Immersion professionnelle en Digital Marketing ■ Entrepreneuriat

The student chooses one major of specialisation

Instead of an international exchange, students follow required courses and one option. Options are accessible in Mons and LLN.

STRUCTURE OF OUR MASTER'S PROGRAMME IN BUSINESS ENGINEERING

YEAR 1				YEAR 2			
Term 1		Term 2		Term 3		Term 4	
Part 1	Part 2	Part 1	Part 2	Part 1	Part 2	Part 1	Part 2
Seminar on Current Managerial Issues (3 credits)				Exchange (optional)		Internship	
Business Engineering focus courses	Major	Business Engineering focus courses	Major	1 required course + 1 elective + 1 language course	Option		
14 credits	15 credits	13 credits	15 credits	15 credits	15 credits	10 credits	
Mémoire (20 crédits)							
<div>Master's Degree in Business Engineering 120 credits</div>							

Master's Degree in Business Engineering
120 credits

- Focus courses take place during the first six weeks of each term.
- Major/optional courses take place during the last six weeks of each term.
- Evaluations are done during each term.

CAREER PROSPECTS

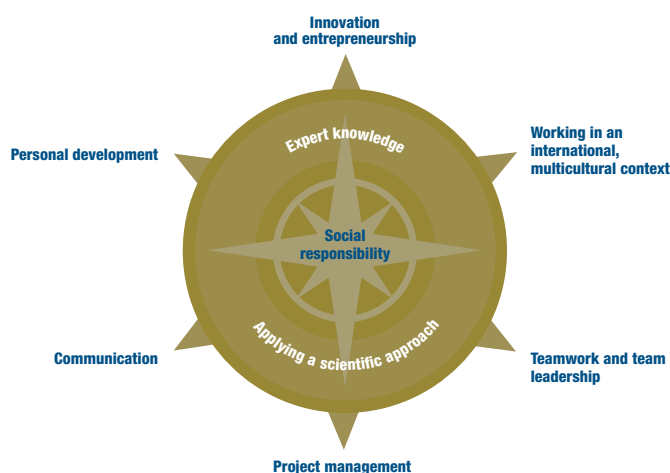
SECTORS:

- Industry
- Banking and insurance
- Retail
- Audit and consulting
- Public administration
- SME
- Multinational corporations
- Associations

OCCUPATIONS:

- Project manager
- IT manager
- Logistics manager
- Purchasing manager
- Brand manager
- Financial analyst
- Data analyst
- ...

SKILLS AND KNOWLEDGE ACQUIRED FROM THE PROGRAMME





Master's Degree in Management

www.uclouvain.be/lsm

- Campus : Louvain-la-Neuve/Mons
- Daytime schedule
- Duration: 2 years
- Language of instruction: English/French
- Activities in other languages: YES
- Activities in other languages: YES
- Internships: YES

A renowned international programme that prepares you for a management career in private or public, national or international, commercial or non-commercial organisations

Organised by the Louvain School of Management in Louvain-la-Neuve and Mons, this master's programme aims to develop your grasp of management fields (finance, marketing, human resources) and imparts a transdisciplinary vision of the company/organisation (strategy, performance management) in order to understand its interactions with its environment.

Programme:

- a shared core course including a Master's thesis (20 credits) and an internship (10 credits);
- a professional focus (30 credits) on mastering management fields OR a research focus (30 credits) on management sciences research (scientific and applied);
- a major of specialisation comprised of six courses (30 credits) in the students chosen field (12 specialisations available);
- an international exchange (30 credits) in one of the Louvain School of Management's partner universities (> 150) OR a term at LSM

LSM also offers curricula for pursuing specific training objectives (application required):

- the CEMS Master in International Management (CEMS MIM);
- the Interdisciplinary Program in Entrepreneurship (CPME);
- the International Business Programme (IB);
- several Double Degree programmes (DD);
- the Financial Management Track (LSM-ICHEC Double Degree).

ADMISSION REQUIREMENTS

For more details on admission requirements, visit:

Louvain-la-Neuve :

www.uclouvain.be/en-prog-gest2m-cond_adm

Mons :

www.uclouvain.be/en-prog-gesm2m-cond_adm

The following table shows programmes in Louvain-la-Neuve and Mons. Regardless of the campuses, specialisations and options are open to all LSM students. French titles means courses are given in French.

PROGRAMME

CORE COURSES	20 credits 10 credits	Master's Thesis Internship
FOCUS	30 credits	<p>Professional focus</p> <p>LLN: Seminar on Current Managerial Issues ■ Corporate Social Responsibility ■ Advanced Strategic Marketing ■ Corporate Finance ■ Seminar on Relational and Managerial Competences ■ Management ■ Accounting - Performance Management ■ Advanced Human Resources and Organisation Management</p> <p>Mons: Seminar on Current Managerial Issues ■ Compétences relationnelles ■ Finance d'entreprise ■ Ressources humaines et management des organisations ■ Strategic Marketing ■ Responsabilité sociétale des entreprises ■ Pilotage de la performance</p> <p>Research focus (LLN)</p> <p>Epistemology of Management Research Methods Reading Seminar Theories of Organizations in Management Communication and Writing Skills</p>
MAJORS	30 credits	<p>LLN: Philippe de Woot in Corporate Sustainable Management ■ Management humain et intervention dans les organisations ■ European Business ■ Corporate Finance ■ Marketing Strategy for Connected Brands ■ Consumer Insights ■ International Finance ■ Formation interdisciplinaire en création d'entreprise (CPME) ■ International Business</p> <p>Mons: Financial Management ■ Révisorat et expertise comptable ■ Décisions marketing tactiques et digitales</p>
INTERNATIONAL EXCHANGE OR ELECTIVES AND OPTION	30 credits	<p>Required courses (15 credits)</p> <p>International Strategic Management (LLN) ■ Compulsory language course ■ Electives</p> <p>Option (15 credits)</p> <p>LLN: Management humain ■ Corporate Sustainable Management ■ Corporate Finance ■ Marketing Strategy for Connected Brands ■ Consumer Insights ■ Sourcing and Procurement</p> <p>Mons: Asset Management ■ Révisorat et expertise comptable ■ Immersion professionnelle en digital marketing ■ Décision Marketing ■ Communication marketing ■ Transport et logistique ■ Entrepreneuriat</p>

The student chooses the professional focus or the research focus.

The student chooses one major of specialisation.

Instead of an international exchange, students follow three electives and one option. Options are accessible in Mons and LLN.

STRUCTURE OF OUR MASTER'S PROGRAMME IN MANAGEMENT

YEAR 1				YEAR 2			
Term 1		Term 2		Term 3		Term 4	
Parti 1	Parti 2	Parti 1	Parti 2	Parti 1	Parti 2	Parti 1	Parti 2
Seminar on Current Managerial Issues (3 credits)				Exchange (optional)		Internship	
Management science focus courses	Major	Management science focus courses	Major	1 required course + 1 elective + 1 language course	Option		
14 credits	15 credits	13 credits	15 credits	15 credits	15 credits		
Mémoire (20 crédits)							
<div>➔ Master's Degree in Management 120 crédits</div>							

Master's Degree in Management
120 crédits

- Focus courses take place during the first six weeks of each term.
- Major/optional courses take place during the last six weeks of each term.
- Evaluations are done during each term.

CAREER PROSPECTS

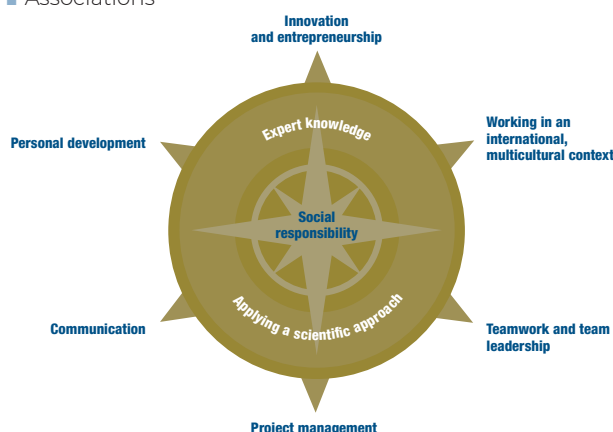
SECTORS:

- Industry
- Banking and insurance
- Retail
- Audit and consulting
- Public administration
- SME
- Multinational
- Research
- Associations

OCCUPATIONS:

- Management control and business auditing
- HR manager
- Financial analyst
- Sales manager
- Brand manager
- Purchasing manager
- ...

SKILLS AND KNOWLEDGE ACQUIRED FROM THE PROGRAMME





Join the people using management as a force for good

The Louvain School of Management

With campuses in Louvain-la-Neuve and Mons, we are the Louvain School of Management, UCLouvain's international management faculty. Proud to be part of a historic research university of high global standing and humane values, we form responsible leaders who care about people and places, who put human values at the center of the enterprise. Accredited since 2006 by EQUIS, the leading Quality Improvement System for Business Schools, we also are the exclusive Belgian partner to offer the prestigious and internationally recognised CEMS Masters in International Management.

Excellence and Ethics in Management

KEY RANKINGS

- EQUIS accredited since 2006, the leading Quality Improvement System for Business Schools
- Ranked by Eduniversal as one of the 50 best business schools worldwide, and 1st in Belgium since 2009
- Ranked 1st in Belgium for the Master in Business Engineering (Financial Times 2011, 2013)
- Ranked in the top 10 for the CEMS-Master in International Management (Financial Times), is currently No. 4
- The unique Belgian partner of CEMS & PIM network

The Belgian state accredits, recognises and financially supports LSM degrees. Programmes are monitored and periodically audited by the Belgian French-speaking region's **Agency for Higher Education Quality Evaluation (AEQES)**. Implementation of the **European Credit Transfer and Accumulation System (ECTS)** ensures our degrees' international comparability and recognition.

The School enjoys high standing nationally and internationally. LSM attracts nearly half of all Master's business students from French-speaking Belgium, plus a significant number of doctoral students. Double Degrees and exchange agreements with more than 150 foreign schools attract several hundred international students each year. LSM is the only Belgian member of the **CEMS Global Alliance in Management Education** and is very active in that role. It is also the sole Belgian institution in the **PIM Network (Partnership in International Management)**.

LSM first received **EQUIS accreditation** in 2006, the leading Quality Improvement System for Business Schools, which has been continuously renewed.

The CEMS Master in International Management, which is part of the School's Master's programmes, has been ranked by the Financial Times among the top 8 worldwide Master's in Management in 2019, and N°1 in Belgium.

Eduuniversal categorises LSM as Belgium's only "universal business school with strong global influence" (5 palms). It rates the School's CPME track as the world's No. 3 entrepreneurship Master's. LSM's International Business track is ranked #3 in Europe and #1 in Belgium.

Our parent university also enjoys outstanding national and international recognition. In November 2018, for instance, UCLouvain was chosen to host a visit and debate by the French President, which was also attended by the Belgian King and Prime Minister. The **Times Higher Education World University Ranking** for 2021 ranked UCLouvain 16th best university worldwide. The **QS World University Ranking** for 2021 ranked UCLouvain 8th best university in the world. Research and teaching networks, such as the Consortium Linking Universities of Science and Technology for Education and Research (CLUSTER), the Coimbra Group, and the EU Framework Programmes.

KEY FIGURES

- 1 school (LSM), 2 campuses (Louvain-la-Neuve, FUCaM Mons)
- 59 core faculty professors, 124 visiting professors and 78 teaching and research assistants
- 1.900 Master students
- 500 international students
- 70 Ph.D students
- 20.000 Alumni

KEY DATES

120 years of history.

Founded in 1898 as the Institute of Applied Economics, it took on the name *Institut d'Administration et de Gestion (IAG)* in 1972, and in 2005 began branding under the new, English name "Louvain School of Management" (LSM).

- 1425 University of Louvain founded
- 1898 School started as university's management department
- 1972 Split into Dutch- and French-speaking universities
- 1980s School offers first systematic Belgian exchange programme
- 1989-90 School joins CEMS and PIM
- 1989-95 School part of ECTS pilot for management studies
- 1999 School founds Baltic Management Institute (BMI) with HEC Paris, NHH, CBS
- 2003 School begins developing its first Executive Education offers
- 2005 IAG-UCL rebranded as Louvain School of Management (LSM)
- 2006 LSM receives EQUIS accreditation
- 2006 UCLouvain awarded ECTS Quality Label
- 2007 Research alliance with FUCaM
- 2011 Unification with FUCaM Mons
- 2014 LSM hosts CEMS Annual Events
- 2015 Full integration of Mons faculty, facilities and students
- 2016 LouRIM management research institute established
- 2019 Joint venture for UCLouvain BMI International EMBA
- 2019 UCLouvain merger with USL-B



EXCELLENCE AND ETHICS IN MANAGEMENT



DOWNLOAD
THIS LEAFLET



Join the people using management
as a force for good.

WHY CHOOSE THE UCLouvain MASTER'S DEGREES IN BUSINESS ENGINEERING AND IN MANAGEMENT?

FOR THEIR RENOWNED PROGRAMMES

Organised in a dynamic, stimulating environment with interactive teaching methods that focus on problem-solving, case studies and project management, the master's degrees are comprised of courses taught by professors and advanced researchers who are experts in their fields. The degree's excellence is also recognised by rankings and accreditations (EQUIS).

FOR THEIR SPECIALISATIONS AND OPTIONS

Choose from a dozen majors of specialisation that enable you to develop a specialisation in line with your aspirations.

TO BE PREPARED PROFESSIONALLY

The many professional development activities organised throughout the year in close collaboration with LSM partner companies prepare you to meet the demands of the job market. Thanks to an internship of at least three months, you become familiar with the business world and what it expects of young graduates. In addition, LSM has developed for every students a "Career Path" based on 5 steps of professional insertion. Its missions: to help you develop your professional project, then get an internship and a job that meet your expectations.

FOR THEIR INTERNATIONAL DIMENSION

Whether through English as the language of instruction, academic exchange (> 150 partners) partners or internships abroad, your master's degree involves a solid international approach.

FOR THEIR RENOWNED DIPLOMAS

Exclusively in Belgium, LSM gives you the possibility of combining your master's degree with the CEMS Master in International Management, issued jointly by the best management schools in the CEMS-MIM network (Global Alliance in Management Education). You can also apply for a Double Degree issued jointly by LSM and one of its partner universities (in Norway, Portugal, Germany, Lithuania, Czech Republic, Belgium, France, ...).

AND ALSO

- to join a prestigious internationally renowned university.
- for the Louvain-la-Neuve and Mons campuses, which offer ideal settings for an enriching and formative university experience enhanced by a wide range of cultural, sport and student activities.

UNIVERSITÉ CATHOLIQUE DE LOUVAIN

LOUVAIN SCHOOL OF
MANAGEMENT
Place des Doyens 1
1348 Louvain-la-Neuve
Tél. +32(0)10 47 83 26
secretariat-lsm@uclouvain.be

Chaussée de Binche 151
7000 Mons
Tél. +32 (0) 65 323 327
info-mons@uclouvain.be

www.uclouvain.be/lsm

- **Choosing a programme**
Centre d'information et
d'orientation (CIO)
www.uclouvain.be/cio
- **Apply to UCLouvain**
Service des inscriptions (SIC)
www.uclouvain.be/inscription
- **Financial Aid**
Service d'aide aux étudiants
(AIDE)
www.uclouvain.be/aide
- **Accommodation**
Service des logements (LOGE)
www.uclouvain.be/logement



@ uclouvain
www.uclouvain.be/futur-etudiant

Responsible editor: Per Agrell.
Brochure information subject to change.
Consult the website for the latest version.

© UCLouvain - 3rd edition
september 2021 (21-0241-03).
Photos : Jacky Delorme, Ophélie Luciano.